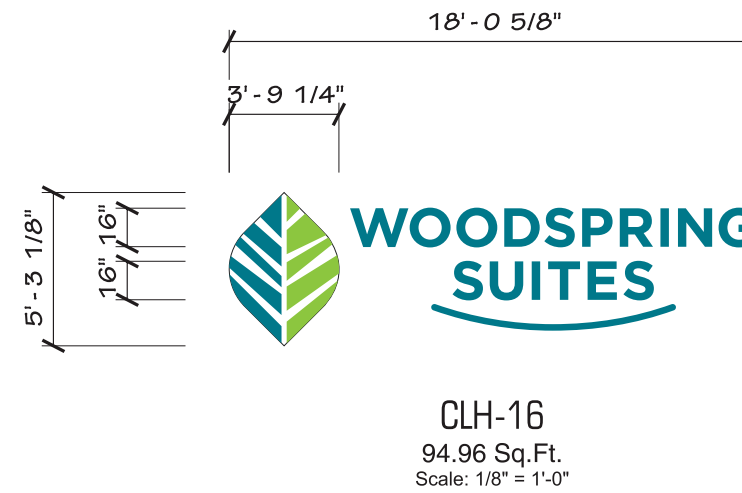


REAR ELEVATION



SIGN DETAILS:

Sign Type: CLH-16

Description: Channel Letters Horizontal

Restoration SOW: N/A

Electrical SOW: To be provided to sign location by others

Landscaping SOW: N/A

Comments:
Proposed - 94.96 sq.ft.



ADDRESS: TINLEY PARK, IL

DRAWN BY: C2C

DATE: 04/19/2016

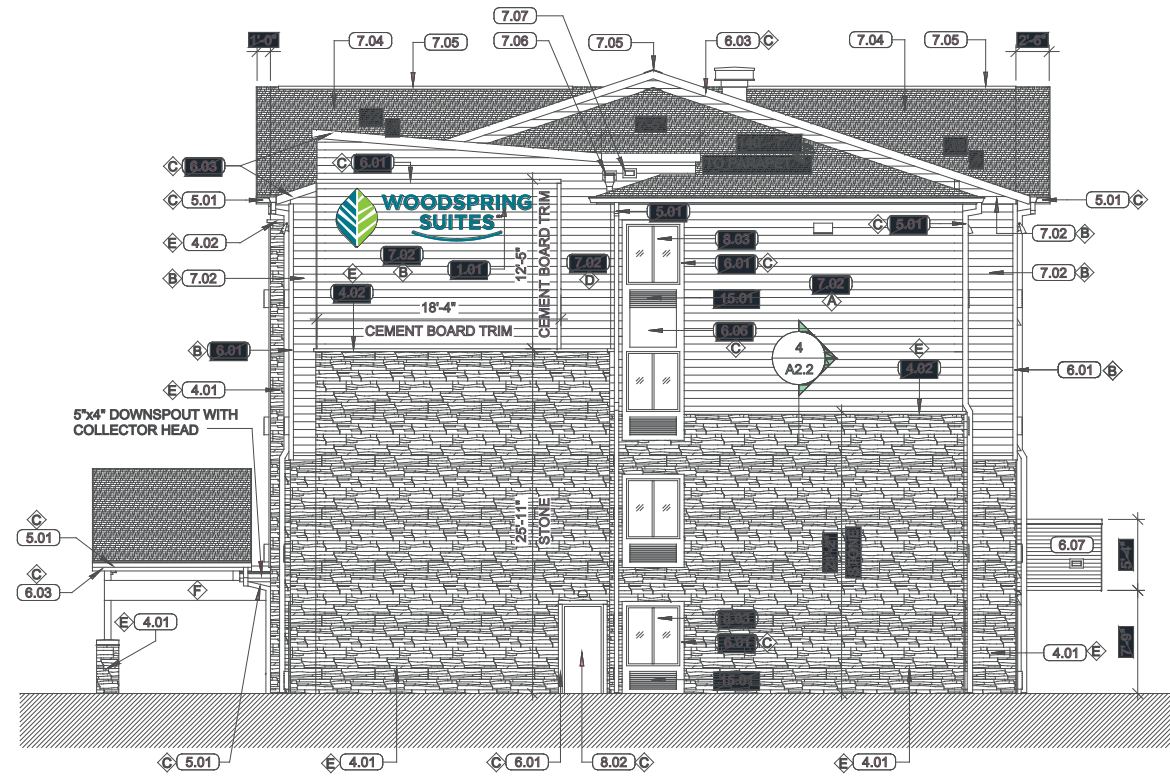
REVISED:

PAGE: 3

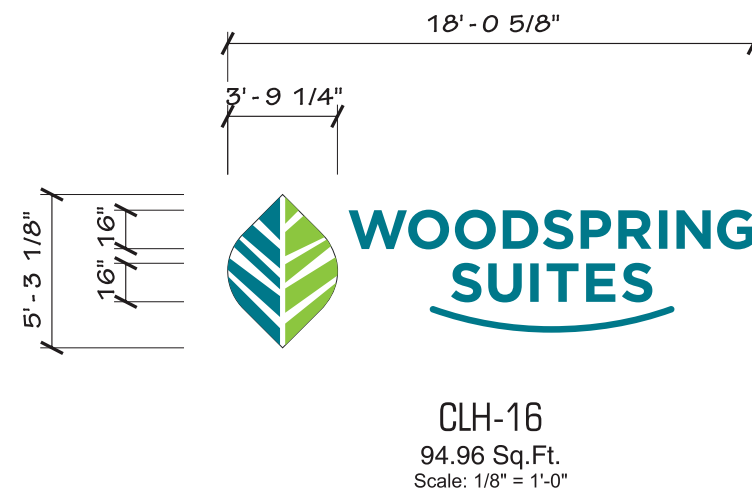
This document is the sole property of Architectural Graphics, Inc. and all design, manufacturing, reproduction, use and sale rights regarding the same are expressly forbidden. It is submitted under a confidential relationship, for a special purpose, and the recipient, by accepting this document assumes custody and agrees that this document will not be copied or reproduced in whole or in part, nor its contents revealed in any manner or to any person except for the purpose for which it was tendered, nor any special features peculiar to this design be



2655 International Parkway
Virginia Beach, VA 23452



RIGHT SIDE ELEVATION



SIGN DETAILS:

Sign Type: CLH-16

Description: Channel Letters Horizontal

Restoration SOW: N/A

Electrical SOW: To be provided to sign location by others

Landscaping SOW: N/A

Comments:
Proposed - 94.96 sq.ft.



ADDRESS: TINLEY PARK, IL

DRAWN BY: C2C

DATE: 04/19/2016

REVISED:

PAGE: 4

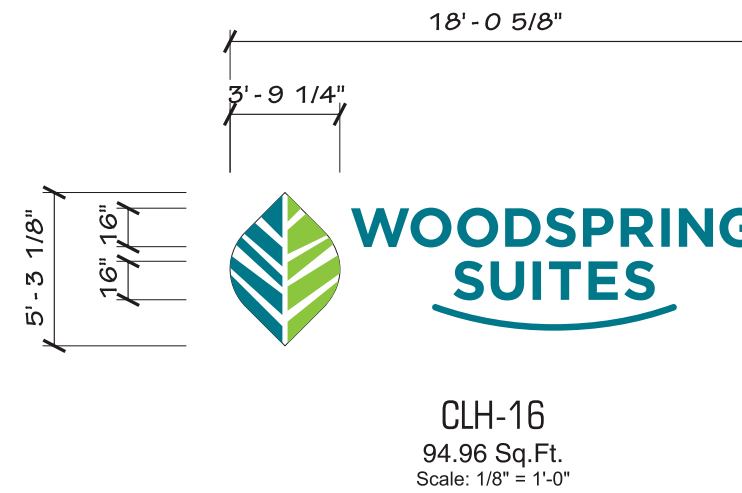
This document is the sole property of Architectural Graphics, Inc. and all design, manufacturing, reproduction, use and sale rights regarding the same are expressly forbidden. It is submitted under a confidential relationship, for a special purpose, and the recipient, by accepting this document assumes custody and agrees that this document will not be copied or reproduced in whole or in part, nor its contents revealed in any manner or to any person except for the purpose for which it was tendered, nor any special features peculiar to this design be



2655 International Parkway
Virginia Beach, VA 23452



LEFT SIDE ELEVATION



SIGN DETAILS:

Sign Type: CLH-16

Description: Channel Letters Horizontal

Restoration SOW: N/A

Electrical SOW: To be provided to sign location by others

Landscaping SOW: N/A

Comments:
Proposed - 94.96 sq.ft.



ADDRESS: TINLEY PARK, IL

DRAWN BY: C2C

DATE: 04/19/2016

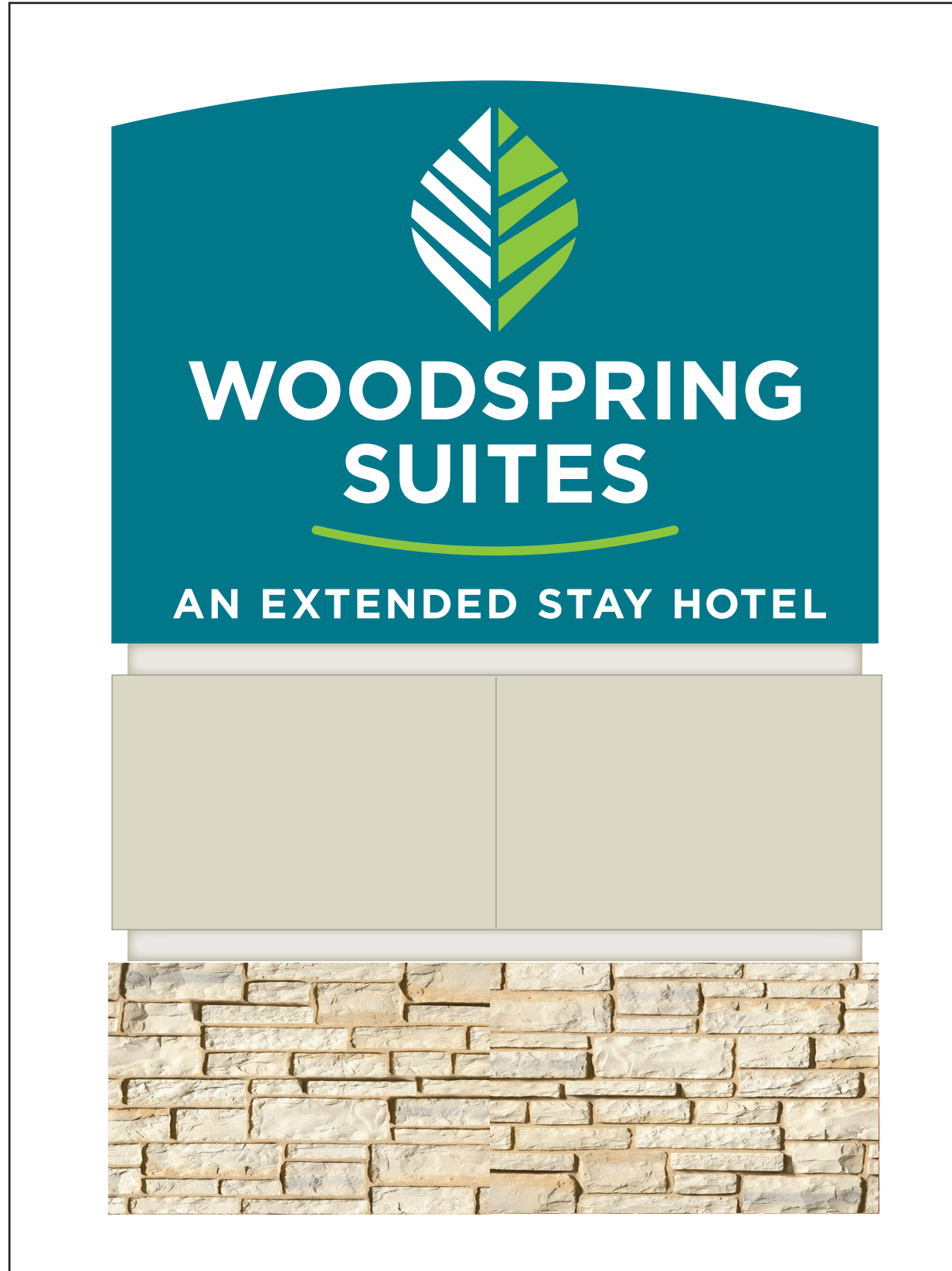
REVISED:

PAGE: 5

This document is the sole property of Architectural Graphics, Inc. and all design, manufacturing, reproduction, use and sale rights regarding the same are expressly forbidden. It is submitted under a confidential relationship, for a special purpose, and the recipient, by accepting this document assumes custody and agrees that this document will not be copied or reproduced in whole or in part, nor its contents revealed in any manner or to any person except for the purpose for which it was tendered, nor any special features peculiar to this design be



2655 International Parkway
Virginia Beach, VA 23452



SIGN DETAILS:

Sign Type: M-50 w/ Brick Base

Description: Custom Monument Sign

Restoration SOW: N/A

Electrical SOW: To be provided to sign location by others

Landscaping SOW: N/A

Comments:
Proposed - 62.41 sq.ft.



ADDRESS: TINLEY PARK, IL

DRAWN BY: RPK

DATE: 07/19/2016

REVISED:

PAGE: 6

SIGN 06

PROPOSED



SIGN DETAILS:

Sign Type: PR-25-Custom

Description: Custom Pylon w/ Multiple Cabinets

Restoration SOW: N/A

Electrical SOW: To be provided to sign location by others

Landscaping SOW: N/A

Comments:
Proposed - 215 sq.ft. / combined area of all cabinets



ADDRESS: TINLEY PARK, IL

 DRAWN BY: RPK

DATE: 04/19/2016
 REVISED:

 PAGE: 7